

---

# SYNTEC SERVO PRODUCTS

---

TRUSTED TECHNICAL SERVICE

# About Syntec PROFILE

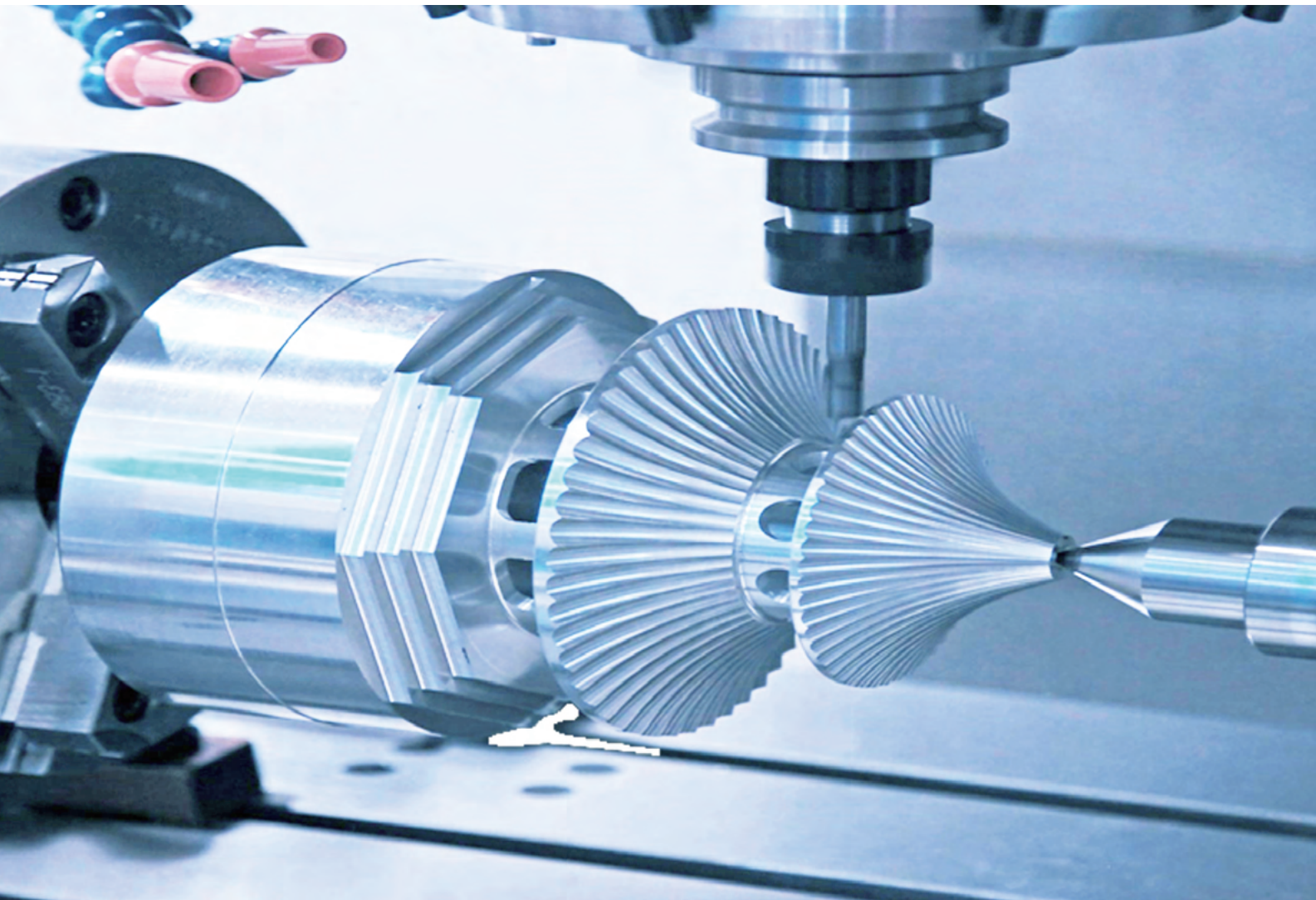
TRUSTED TECHNICAL SERVICE

SYNTEC has become one of the most influential and development potential controller brand in the Asia-Pacific market. With smart manufacturing system among its core strengths, SYNTEC is well experienced in lean and diverse manufacturing, the digital and physical integration, and on-site services. With the support of multiple distributions, we are the ideal one-stop shop for complete solutions and we hope all the small and medium manufacturers can join us in stepping into Industry 4.0.

## Universal Drive



SYNTEC Drives feature powerful product flexibility that supports motors and encoders of major brands, providing applications in multiple realms.



# Product Introduction

## Multi-axis Servo Drive



### Multi-axis Servo Drive ( XL )

- Applicable to lathe, milling machine, and similar realms of industrial control.
- Up to 18.5kW for spindle drive, 3kW for axial drive.
- Up to 3+1 axis servo control.
- Supports versatile serial encoders.
- Supports M3 controller communication interface.
- High speed high precision controller, supports both scalar control and field oriented control.
- Extensive integration of axis control functions and synchronous control of multiple axes.
- Simple wiring. Space saving.

### Multi-axis Servo Drive ( M )

- Applicable to engraving and milling machines, woodworking and similar realms of industrial control.
- Drive and control in one, more Integration, improve reliabilities.
- Offers IO card options of versatile specifications for optimal scalability.
- Supports versatile serial encoders.
- Supports M3 controller communication interface.
- High speed high precision controller, supports both scalar control and field oriented control.
- Extensive integration of axis control functions and synchronous control of multiple axes.
- Simple wiring. Space saving.



### Mini Multi-axis Servo Drive ( XS )



- Applicable to professional equipment, automation and similar realms of industrial control.
- Small volume, numerous feature, combine convenience with practicality perfectly.
- Supports versatile serial encoders.
- Supports M3 controller communication interface.
- High speed high precision controller, supports both scalar control and field oriented control.
- Extensive integration of axis control functions and synchronous control of multiple axes.
- Simple wiring. Space saving.



# Single-axis Servo Drive and Motor

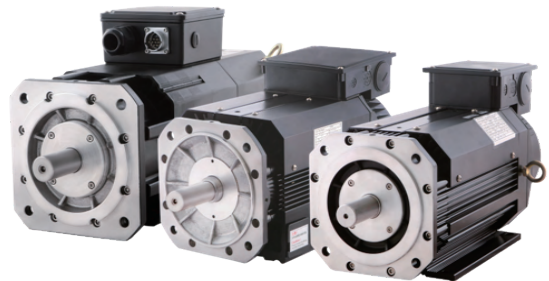


## SPD/SVD Series

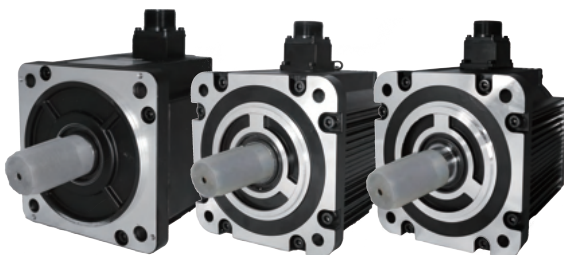
- Up to 30kW spindle drive.
- Up to 3kW for axial drive.
- Supports M2/M3 controller communication interface
- High speed high precision controller, supports both scalar control and field oriented control.
- Capable of high speed positioning, precision processing and resonance elimination functions.
- Supports versatile serial encoders.

## SYNTEC Spindle System

- Versatile spindle motor for satisfactory application such as lathe, drilling, machining center, engraving and milling machines.
- Both vertical and horizontal installation for high compatibility.
- Maximum speed up to 24000rpm, maximum torque up to 116Nm, Satisfy the requirement of different industries.
- Supports KTY84 temperature detection. Optional 220V and 380V voltage inputs.
- In combination with SYNTEC serial HD encoder for more control stability and better machining.



## SYNTEC Servo Solution



- Support 16 million resolution encoder, high speed, high precision positioning.
- IP67 protection class, significantly reduces motor failure rate.
- Maximum speed up to 6000rpm, maximum torque up to 120Nm, Satisfy the requirement of different industries.
- Significantly reduces processing time, providing exceptional machining performances.
- Applicable to CNC machine, automation and versatile machining applications.

# Accessories

## SYNTEC Encoder

### Magnetic encoder reading head and magnetic ring



- Serial communication type encoder resolution up to 1,330,000.
- Features high precision, high definition and robust environmental tolerance.
- No-touch sensing technology; compact design, high compatibility.
- Various magnetic ring sizes for versatile applications.
- Suitable for machine spindle, lathe dual feedback and built-in motor applications.

### Gear encoder reading head

- Be compatible with gear ring of client, simple replacement and easy installation.
- No-touch sensing technology; ensure system no wear and tear, outstanding product reliability.
- Small size reading head is suitable for small space installation.
- High protection level(IP67) design, applicable to all kinds of harsh environments.

## Option Module

### FC temperature sensor module

- Supports commonly used KTY84 temperature sensors.
- Features adjustable temperature protection limits for both safety and convenience.
- Real time surveillance over machine temperature, ensures safety of motor and control electronics.

### AD/DA Module

- Multiple AD/DA ports for satisfying integration needs of various industries.
- SYNTEC AD/DA modules provide users with versatile applications.



### Encoder Module

- Supports third party encoders via simple installation.
- SYNTEC Encoder expansion modules provide serial and non-serial encoders of other makes.
- Applicable to dual feedback or external measurement, satisfying requirements of users in all layers.



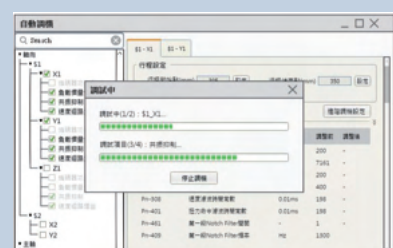
# ≡ Servo Tuning Software

The controller supports servo tuning

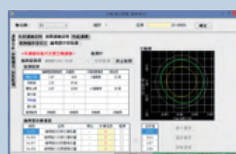


User-friendly Servo Tuning

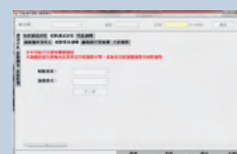
One-touch Servo Tuning



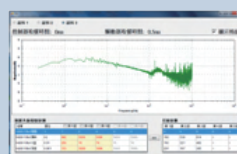
Simplified servo tuning procedure; automatic servo tuning for optimal servo parameters by pressing a single key.



Installation test



Advanced inertia



Vibration Suppression



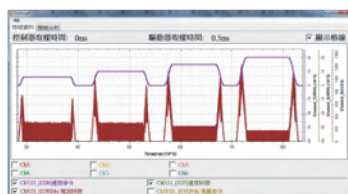
Automatic gain tuning

A screenshot of a '參數列表' (List of parameters) window. It displays a table with columns for parameter names, values, and units.

List of parameters

Versatile Application and Analysis Functions

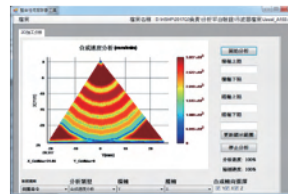
Provides data analysis functions for fast troubleshooting of processing problems.



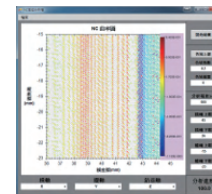
Oscilloscope



Quad-Peak compensation



2D machining analysis



NC analysis

# SYNTEC Sizing Software

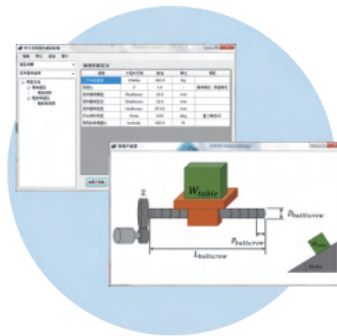
Recommend suitable SYNTEC motor and drive according to user demand and application. Automatically update product information after network connection, providing the user with the latest information.



Motion planning



Mechanism setting



Comparison with similar products



Provide optimal motors and drives.

- Easy tuning
- Perfect reliability.

Drive Selection		
Single-Axis Drive		Multi-Axes Drive
Model No.	SupportAxes	Voltage(V)
SMD-33B-2575-□□	3	380
SMD-34A-2550-□□	4	380

Recommended SYNTEC packages

Syntec Motor		
Model No.	Watt(KW)	Voltage(V)
AM4-30-E12-M1	0.8	380
AM3-60-E12-F3	1	380
AM5-40-E12-F3	1.1	380
AM8-40-E12-F3	1.7	380
AM11-40-E12-F3	2.4	380

Recommended SYNTEC drives





# Spindle Combination Overview

Model	Flange size mm	Shaft diameter mm	Rated Torque N-m	Max. Torque	Rated speed rpm	Max. speed	Encoder --	Single-axis drive --	Multi-axis drive --
<b>α series motor (Applicable to vertical machining center)</b>									
M5.5-12-B□-0-00	178	28	23.3	34.7	1500	12000	SYNTEC 18bit serial HD encoder	SPD-32B1-110	SMH-25/25-75-M SMH-50/50/50-150-XL
M7.5-10-B□-0-00	198	32	34.7	47.3	1500	10000			
M7.5-12-B□-0-00	198	32	34.7	58.9	1500	12000			
M11-08-B□-0-00	198	48	47.3	69.4	1500	8000		SPD-32B1-185	SMH-35/35-100-M SMH-50/50/50-150-XL
M11-12-B□-0-00	198	32	47.8	71.7	1500	12000			
M15-07-B□-0-00	260	48	69.4	94.6	1500	7000			
M18-07-B□-0-00	260	48	94.6	116.7	1500	7000			
<b>β series motor (Applicable to lathing)</b>									
M5.5-08-C□-0-01	178	28	17.51	26.03	2000	8000	SYNTEC 18bit serial HD encoder	SPD-32B2-110	SMH-25/25-75-M SMH-35/35/35-100-XL
M7.5-08-C□-0-01	178	28	26.3	35.5	2000	8000			
M9-06-C4-0-01	260	38	42	56.8	1500	6000			
M12-06-C4-0-01	260	42	56	75.7	1500	6000			
<b>β series motor (for mainland China only) (Applicable to lathing)</b>									
M5.5-08-A4-0-10	180	28	17.7	26.5	2000	8000	SYNTEC 18bit serial HD encoder	SPD-32B1-050	SMH-25/25/35-75-XL
M7.5-08-A4-0-10	180	28	26.3	39.5	2000	8000		SPD-32B1-110	SMH-25/25-75-M SMH-35/35/35-100-XL
M11-08-A4-0-10	210	32	35.8	53.7	2000	8000		SPD-32B1-185	SMH-35/35-100-M SMH-50/50/50-150-XL
M15-08-A4-0-10	210	48	52.5	77.8	2000	8000			
<b>C series motor (Applicable to Small vertical machining center)</b>									
M7.5-12-B□-0-01	178	28	17.51	23.8	3000	12000	SYNTEC 18bit serial HD encoder	SPD-32B1-110	SMH-25/25-75-M SMH-35/35/35-100-XL
M7.5-20-B4-0-01	178	28	17.51	23.8	3000	20000			
M11-08-B□-0-01	220	32	35.5	52.06	2000	8000		SPD-32B1-185	SMH-35/35-100-M SMH-50/50/50-150-XL
M12-12-B4-0-01	178	28	26	38	3000	12000			
M12-20-B4-0-01	178	28	26	38	3000	20000			
M15-08-B4-0-01	220	48	52.06	71	2000	8000			
M15-12-B4-0-01	178	28	34.7	47.3	3000	12000			
<b>H series motor (Applicable to Drilling)</b>									
L5.5-12-B□-0-00	178	28	11.67	17.35	3000	12000	SYNTEC 18bit serial HD encoder	SPD-32B1-050	SMH-25/25/35-75-XL
L5.5-18-B□-0-00	178	28	11.67	17.35	3000	18000			
L5.5-24-B□-0-00	150	24	11.6	17.35	3000	24000			
SL5.5-24-B□-0-00	150	24	7	10.5	5000	24000		SPD-32B1-110	SMH-25/25-75-M SMH-35/35/35-100-XL
L7.5-15-B□-0-00	198	32	17.35	23.66	3000	15000			
M11-24-B4-0-01	178	24	14	21	5000	24000			

## Spindle Designation

S08 – SP – M 5.5 – 12 – A 4 – 0 – 00

1st    2nd    3rd 4th    5th    6th 7th    8th    9th

Item	1st	2nd	3rd	4th	5th	6th	7th	8th	9th
Definition	Relevant Servo Product	SYNTEC SP Series Induction Spindle	SL: Super Low Inertia L: Low Inertia M: Medium-High /Medium-Low Inertia	Max. Power(kW) 5.5→5.5kW	Max. RPM (*1000rpm) 12→12000rpm	A Mounting A: Foot mount B: B5 Flange Mount C: Vertical and Horizontal	Input Voltage 2: 200V 4: 400V	0: Optic Axis 2: Central Outlet	Ver.

# Servo Combination Overview

## 380V-Class

Model	Flange size	Shaft diameter	Rated Torque	Max. Torque	Rated speed	Max. speed	Encoder	Optional accessories	Single-axis drive	Multi-axis servo drive	
	mm	mm	N·m		rpm						
AM06-50-E12-□-Z3	60	14	0.64	1.92	3000	5000	Nikon24bit absolute encoder	B:Brake K: Key Way BK: Brake + Key Way	SVD-32B1-020	SMH-25/25/35-75-XL	
AM3-50-E12-□-Z3	80	19	3.5	10.5	3000	5000			SPD-32B1-020	SMH-35/35-100-M SMH-35/35/35-100-XL	
AM3-60-E12-□-F3	90	19	3.2	10	3000	6000			SVD-32B1-020	SMH-25/25-75-M SMH-25/25/35-75-XL	
AM5-40-E12-□-F3	130	19	5.39	14.9	2000	4000			SVD-32B1-020	SMH-35/35-100-M SMH-35/35/35-100-XL	
AM8-40-E12-□-F3	130	22	8.34	30.8	2000	4000			SVD-32B1-020	SMH-35/35/35-100-XL	
AM11-40-E12-□-F3	130	24	11.5	34	2000	4000			SPD-32B1-050	SMH-50/50/50-150-XL	
AM15-40-E12-□-F3	130	24	15	45	2000	4000			SPD-32B1-110	--	
AM18-40-E12-□-F4	180	35	18.6	48.5	2000	4000					
AM28-40-E12-□-F4	180	35	28.4	76	2000	3000					
for mainland China only											
AM35-20-E12-□-F4	180	42	35	91.4	1500	2000	Nikon24bit absolute encoder	B:Brake K: Key Way BK: Brake + Key Way	SPD-32B1-110	--	
AM48-20-E12-□-F4	180	42	48	120.9	1500	2000			B:Brake	SPD-32B1-110	--
AM19-40-E12-□-M1	180	35	19	57	2000	4000					
AM27-30-E12-□-M1	180	35	27	81	1500	3000					
AM35-20-E12-□-M1	180	42	35	70	1500	2000					
AM48-20-E12-□-M1	180	42	48	70	1500	2000					

## 220V-Class

Model	Flange size	Shaft diameter	Rated Torque	Max. Torque	Rated Speed	Max. Speed	Encoder	Optional accessories	Single-axis drive	Multi-axis servo drive		
	mm	mm	N·m		rpm							
AM4-30-E12-□-M1	110	19	4	12	2000	3000	Nikon24bit absolute encoder	B:Brake K: Key Way BK: Brake + Key Way	SVD-22B1-030	--		
AM6-30-E12-□-M1	110	19	6	18	2000	3000			B:Brake	SVD-22B1-030	--	
AM03-50-E12-□-Z3	40	8	0.32	0.96	3000	5000				SMD-30/30/30/30-M SCD-30/30/30/30-M SMD-30/30/30/30-XS		
AM06-50-E12-□-Z3	60	14	0.64	1.92	3000	5000				SVD-22B1-010	SMD-30/30/30/30-M SCD-30/30/30/30-M SMD-30/30/30/30-XS	
AM1-50-E12-□-Z3	60	14	1.9	5.7	3000	5000				SVD-22B1-030	--	
AM3-50-E12-□-Z3	80	19	3.5	10.5	3000	5000						
AM03-50-E22-□-H1	40	8	0.32	1.12	3000	6000			Hcfa17bit absolute encoder	K: Key Way BK: Brake + Key Way	SVD-22B1-010	SMD-30/30/30/30-M SCD-30/30/30/30-M SMD-30/30/30/30-XS
AM06-50-E22-□-H1	60	14	0.64	1.91	3000	5000						
AM1-50-E22-□-H1	60	14	1.27	3.82	3000	5000						
AM2-50-E22-□-H1	80	19	2.39	7.1	3000	4500						
AM5-50-E22-□-H1	130	19	5.39	16.2	1500	3000		SVD-22B1-030			--	
AM8-50-E22-□-H1	130	22	8.28	24.84	1500	3000						
AM11-50-E22-□-H1	130	24	11.5	34.5	1500	3000		SVD-22B1-030	--			

\*Note: Accessory suitable for this motor model\*

# Servo Motor Designation

S08 – AM – 5 – 40 – E 12 – B - F1

1st      2nd      3rd      4th      5th      6th      7th      8th

	1st	2nd	3rd	4th	5th	6th	7th	9th
Item	S08	AM	5	40	E	12	B	F1
Definition	Relevant Servo Product	AM: Axial Motor	Rated torque Prefix 0 if rated torque <1Nm 5: for rated torque = 5Nm 06: for rated torque = 0.6Nm	Max. RPM (*100rpm) 40*100=4000rpm	Encoder Type E: Encoder	Encoder 12: Nikon	Options B: Brake S: Oil Seal K: Key Way BS: Brake + Oil Seal BK: Brake + Key Way SK: Oil Seal + Key Way BSK: Brake + Oil Seal + Key Way	Ver.



# NOTE

---

---

---

---

---

---

---

---

---

---

---

---

---

---

---

---

---

---

---

---

---

---

---

---

---

Trusted Technical Service



# Global Locations

## TAIWAN

### Hsinchu(Headquarter)

SYNTEC Technology Co., Ltd  
 ADD : No.25, Yanfa 2nd Rd., East Dist.,  
 Hsinchu City 300, Taiwan (R.O.C.)  
 TEL : +886-3-6663553  
 FAX : +886-3-6663505  
 E-mail: sales@syntecclub.com.tw

### Taichung(distributor)

SUN-CNC Co., Ltd  
 ADD: No. 90, 22 Alley, 428 Alley, Yi Section,  
 Fengyuan Boulevard, Fengyuan District,  
 Taichung City  
 TEL: +886-4-25337731  
 TAX: +886-4-25349224

TANLU-CNC Co., Ltd  
 ADD: No. 42, Jingming Road, Taichung City  
 TEL: +886-4-23102626  
 TAX: +886-4-23102636

### Tainan(distributor)

HUNG LUN Technology Co., Ltd  
 ADD: No. 10, Luchuan Road, Xinying District,  
 Tainan City  
 TEL: +886-6-2796707  
 TAX: +886-6-2796705

## AROUND THE WORLD

### Malaysia

MYSYNTEC TECHNOLOGY SDN BHD  
 ADD : 2, Jalan Astana 1D, Bandar Bukit Raja, 41050 Klang,  
 Selangor, Malaysia.  
 TEL : +6017-6743282  
 E-mail : otis.siah@syntecclub.com.tw

### Thailand

SYNTEC Thailand Office  
 ADD : 78/38 Kheha Romkiao Rd.,  
 Khlong Song Ton Nun, Lat Krabang, Bangkok, 10520  
 TEL : +662-006-5738  
 E-mail : thanawat@syntecclub.com.tw

### Vietnam

VNSYNTEC TECHNOLOGY CO., LTD  
 ADD : 3F, No. 36, A4 Street, Ward 12, Tan Binh District,  
 Ho Chi Minh City, VietNam  
 TEL : +84 938332829  
 TAX : +84 282 253 5556  
 E-mail : andyngo@syntecclub.com.tw

### Turkey

SYNTEC Turkey Office  
 ADD : Küçükbakkalkoy Mah. Vedat Günyol Cd.  
 Defne Sok. No:1 D:1502 Flora Residence,  
 34750 Atasehir/Istanbul, Türkiye  
 TEL : +90-216-2662475  
 E-mail : daisy.cheng@syntecclub.com.tw

### USA (South California)

SYNTEC USA Office  
 ADD : 766 Pinefalls Ave.Walnut, CA 91789  
 TEL : +1 909-551-0187  
 E-mail : info@syntecamerica.com

### Indonesia(distributor)

PT. OTOMASI BERSAMA INDONESIA  
 ADD : Ruko Arcadia Mataram Blok B, No 15, Kelurahan  
 Cibatu, Kecamatan Cikarang selatan, 17530, Indonesia  
 TEL : +6221 2210 4832/ +6281285886246  
 E-mail : yulius@otomasi.co

## CHINA

### Jiangsu(Headquarter)

Suzhou SYNTEC of CNC Equipment Co., Ltd.(SZST)  
 ADD : Building B, No.9 Chunhui Road,Suzou Industrial  
 Park,China  
 TEL : 0512-69008860  
 FAX : 0512-65246029  
 E-mail: service@syntecclub.com.cn

Suzhou Huaxin of CNC Equipment Co., Ltd.(SZHX)  
 ADD : Building C, No.9 Chunhui Road,Suzou Industrial  
 Park,China  
 TEL : 0512-69008890  
 FAX : 0512-69560818

Nantong SYNTEC of CNC Equipment Co., Ltd. ( NTST )  
 ADD : Room 1301, Building 1, Shangye Center,  
 Jincheng, No.108, Dajie, Nantong City  
 TEL : 0513-89077025  
 FAX : 0513-89072057

Nanjing SYNTEC of CNC Equipment Co., Ltd.(NJST)  
 ADD : Room 104, Unit 2, Building 6, Jiulonghu Villa,  
 No. 188, Qingshuiting West Road, Jiangning District,  
 Nanjing City  
 TEL : 025-52717710  
 FAX : 025-52717702

### Anhui

Hefei SYNTEC of CNC Equipment Co., Ltd. (HFST)  
 ADD : Hefei Binhu Baohe District Century City Fu Hui  
 Yuan T4-2202  
 TEL : 0551-63814183  
 FAX : 0551-63814183

### Shaanxi

Xi'an SYNTEC of CNC Equipment Co., Ltd. (XAST)  
 ADD : Room 11328, Unit 1, Building 4, Duhui, I,  
 Yicuiyuan, No. 10, Tangyan South Road, Gaoxin  
 District, Xian City  
 TEL : 029-88287423  
 FAX : 029-88287423



## Guangdong

Guangdong SYNTEC of CNC Equipment Co., Ltd.  
 ADD : 201301Chang, Building A, No. 10, Jiangan Road,  
 Zhujiang Street, Nansha District, Guangzhou City  
 TEL : 020-39089367  
 FAX : 020-39089791

Dongguan SYNTEC of CNC Equipment Co., Ltd.(DGST)  
 ADD : Zone B, 3F, Building1 No.522,Chain-An East Rd.,  
 Changan Townmap  
 TEL : 0769-81660318  
 FAX : 0769-81660328

Guangzhou SYNTEC of CNC Equipment Co., Ltd.(GZST)  
 ADD : 2Ti404, Zhiqi, No. 8, LuoJia Village Section, Fuyi  
 Road, Dalong Street, Panyu District, Guangzhou City  
 TEL : 020-34583040  
 FAX : 020-34583220

Changping  
 The Suzhou new generation of CNC Equipment Co., Ltd.  
 Chongqing Branch  
 ADD : Floor 5, Huilong Building, No. 8, Qianyi Road,  
 Banshi Village, Changping Town, Dongwan City  
 TEL : 0769-82826802  
 FAX : 0769-82826820

Shenzhen SYNTEC of CNC Equipment Co., Ltd. ( SCST )  
 ADD : 5F, Building C, Sunshine Technology Park,  
 Gin-Long 2nd Rd., Baolong Industrial Zone, Shenzhen  
 Longgang District  
 TEL : 0755-84320380  
 FAX : 0755-84559490

Jiangmen SYNTEC of CNC Equipment Co., Ltd.(JMST)  
 ADD : Room 02, Floor 7, Huoju Building, Gaoxin  
 District, No. 288, Jinou Road, Jianghai District,  
 Jiangmen City, Guangdong Province  
 TEL : 0750-3762143  
 FAX : 0750-3771824

## Fujian

Xiamen SYNTEC of CNC Equipment Co., Ltd.(XMST)  
 ADD : No. 100,B Chuang Chang Fang 3F East,Jin Fu  
 Road, Tong An District,Xiamen City, Fujian Province,  
 China  
 TEL : +86-592-7191901  
 FAX : +86-592-7220536

## Zhejiang

Hangzhou SYNTEC of CNC Equipment Co., Ltd.(HZST)  
 ADD : Room1202 Unit2 Buiding1, Edifice DiKai ,  
 Jincheng Road, Beigan Street,Xiaoshan District  
 ,Hangzhou City,Zhejiang Province, China  
 TEL : 0571-82751187  
 FAX : 0571-82751186

Ningbo SYNTEC of CNC Equipment Co., Ltd.(NBST)  
 ADD : Room 1207, No.262,416 Alley, Zhaohui  
 Road,Jiangdong District, Ningbo City  
 TEL : 0574-87750305  
 FAX : 0574-87750306

Wenling SYNTEC of CNC Equipment Co., Ltd. (WLST)  
 ADD : Room 1206, Department A, Zhenxing  
 Plaza,Taiping Subdistrict, Wenling Citymap  
 TEL : 0576- 86138372  
 FAX : 0576-86119106

## Luoyang

Luoyang SYNTEC of CNC Equipment Co., Ltd. (LYST)  
 ADD : 706, Runsheng Building, Junction Of Heluo Road  
 And Sanshan Road, Gaoxinjishu Development Area,  
 Luoyang City  
 TEL : 0379-65110352  
 FAX : 0379-65110352

## Chongqing

Chongqing SYNTEC of CNC Equipment Co., Ltd. (CQST)  
 ADD : 11-6, Building 2, No. 62, Taishan Boulevard East  
 Section, Bu New District, Chongqing City  
 TEL : 023-67913296  
 FAX : 023-67634382

## Tianjin

Tianjin SYNTEC of CNC Equipment Co., Ltd. (TJST)  
 ADD : No. 37, A District, Huayuan, Qiaoruifeng, No. 7,  
 Waihuan West Road, Xiqing District, Tianjin City  
 TEL : 022-23739192

## Shandong

Jinan SYNTEC of CNC Equipment Co., Ltd.(JNST)  
 ADD : Room 101, Unit 3, Building 9, Kangqiao, Luneng,  
 No. 28, Sankongqiao Street, Tianqiao District, Jinan  
 TEL : 0531-85907208  
 FAX : 0531-85905708

## Hubei

Wuhan SYNTEC of CNC Equipment Co., Ltd. (WHST)  
 ADD : Room 2003-2006, A Guanggogooji,  
 No.456,Luoyu East Road, Hongshan District , Wuhan,  
 China  
 TEL : 027-87638876  
 FAX : 027-87204137

## Liaoning

Shenyang SYNTEC of CNC Equipment Co., Ltd. (SYST)  
 ADD : C61-2-1, Diyicheng, No. 1, 1Jia1, Qigong  
 Street, Tiexi District, Shenyang City, Liaoning  
 Province  
 TEL : 18698806526



新代科技股份有限公司  
SYNTEC Technology Co.,Ltd.

台灣新竹市東區研發二路25號

☎ 886-3-6663553  
☎ 886-3-6663505  
✉ sales@syntecclub.com.tw

新代科技(蘇州)有限公司  
Suzhou SYNTEC Equipment Co.,Ltd.

江蘇省蘇州工業園區春輝路9號

☎ 86-512-69008860  
☎ 86-512-65246029  
✉ service@syntecclub.com.cn



<http://www.syntecclub.com.tw>